

# SUPPLEMENT FOR ALL CUBE HYBRID MODELS WITH FULLY INTEGRATED POWERTUBE AKKU



ENGLISH

# 1 Operating manual for CUBE Hybrid models with Bosch PowerTube battery

## 1.1 Conventions

### Symbol

**!** **Note!**  
Draws your attention to items requiring your particular attention.



**Warning!**  
Makes you aware of the possibility of slight personal injury and possible material damage.



**Danger!**  
Makes you aware of the possibility of grave personal injury which may even lead to death.

## 1.2 General information

These extended operating instructions serve to make you familiar with the correct handling of the locking system. If you should have further questions related to the correct fixing of your battery and/or the battery cover, please always contact your **CUBE Specialist Dealer**.

# 2 PowerTube battery cover with push button

## 2.1 General information

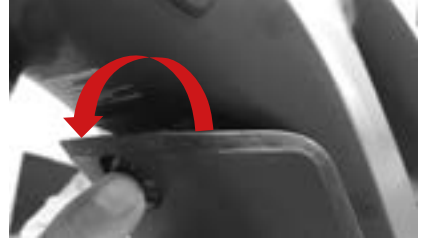
Bosch PowerTube batteries are used on all CUBE Hybrid models with a battery integrated into the down tube. All CUBE Hybrid models, except Kathmandu Hybrid + Nuride Hybrid EE 750 models (slide lock), use a safe-to-use locking system on the frame to fix the battery cover into place (Fig. 01).

Fig. 01



## 2.2 Open the PowerTube battery cover

Fig. 02

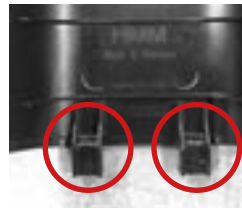


Press the push button (Fig. 02) to release the PowerTube battery cover. Then remove the battery cover by pulling it forward out of the frame (Fig. 03). Due to the two attached safety catches (Fig. 04), the battery cover can only be removed by pulling it to the front as shown in (Fig. 03).

Fig. 03



Fig. 04



## 2.3 Closing the PowerTube battery cover

**!** Before attaching the PowerTube battery cover, ensure the battery is firmly attached in the frame and closed.

First insert the retaining lugs of the battery cover into the lower tube.

Then press the PowerTube battery cover with the heel or flat of your hand towards the frame as shown (Fig. 05) until you feel and hear the push button engaged.

Fig. 05



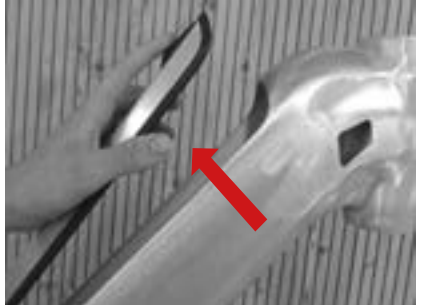
### 3.2 Opening the PowerTube battery cover (slide lock)

To open and remove the battery cover, slide the slide lock on the battery cover downwards (Fig. 07) and lift the battery cover off the frame, pulling the battery cover upwards out of the frame allows complete removal (Fig. 08).

Fig. 07



Fig. 08



### 3.3 Closing the PowerTube battery cover (slide lock)



Before attaching the cover, make sure that the battery is firmly fixed into place and locked in the frame.

First insert the lower retaining lug (Fig. 09) of the battery cover into the down tube. Then slide the slide lock on the battery cover downwards and hold it in this position. After that, press the battery cover at the upper end against the frame and release the slide lock. The slide lock must now snap into place on the frame (Fig. 10).

## 3 PowerTube battery cover with slide lock

### 3.1 General information

PowerTube battery covers with a slide lock (Fig. 06) are used on CUBE Hybrid models of the Kathmandu Hybrid and Nuride Hybrid Easy Entry model range with 750 wh PowerTube battery.

Fig. 06





Make sure that the slide lock on the frame engages and the battery cover is firmly fixed (Fig. 11).



**Risk of Personal Injury and Material Damage!**

**Finally check again for the secure retention of the battery cover.**

Fig. 09

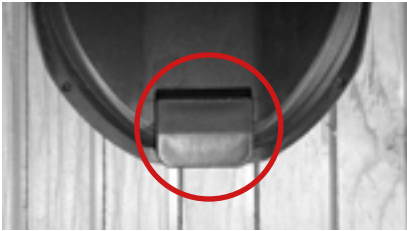


Fig. 10

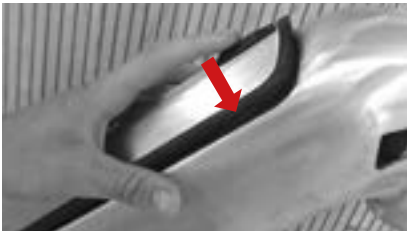


Fig. 11



## 4 Important information on handling and use



**Danger of property damage!**

**Check the battery for secure fit in the frame and check to ensure the battery cover is affixed properly before every use.**



**Risk of Personal Injury and Material Damage!**

Information on correctly handling and caring for your battery is available in the manufacturer's operating manual or as a download on the manufacturer's homepage.



**(<https://www.bosch-ebike.com/de/service/downloads>).**



### Company details

**Manufacturer:** Pending System GmbH & Co. KG  
Ludwig-Hüttner-Straße 5-7  
95679 Waldershof  
Germany  
[www.cube.eu](http://www.cube.eu)  
[Info@cube.eu](mailto:Info@cube.eu)

FON + 49(0) 9231-97 007 80

FAX + 49(0) 9231-97 007 199